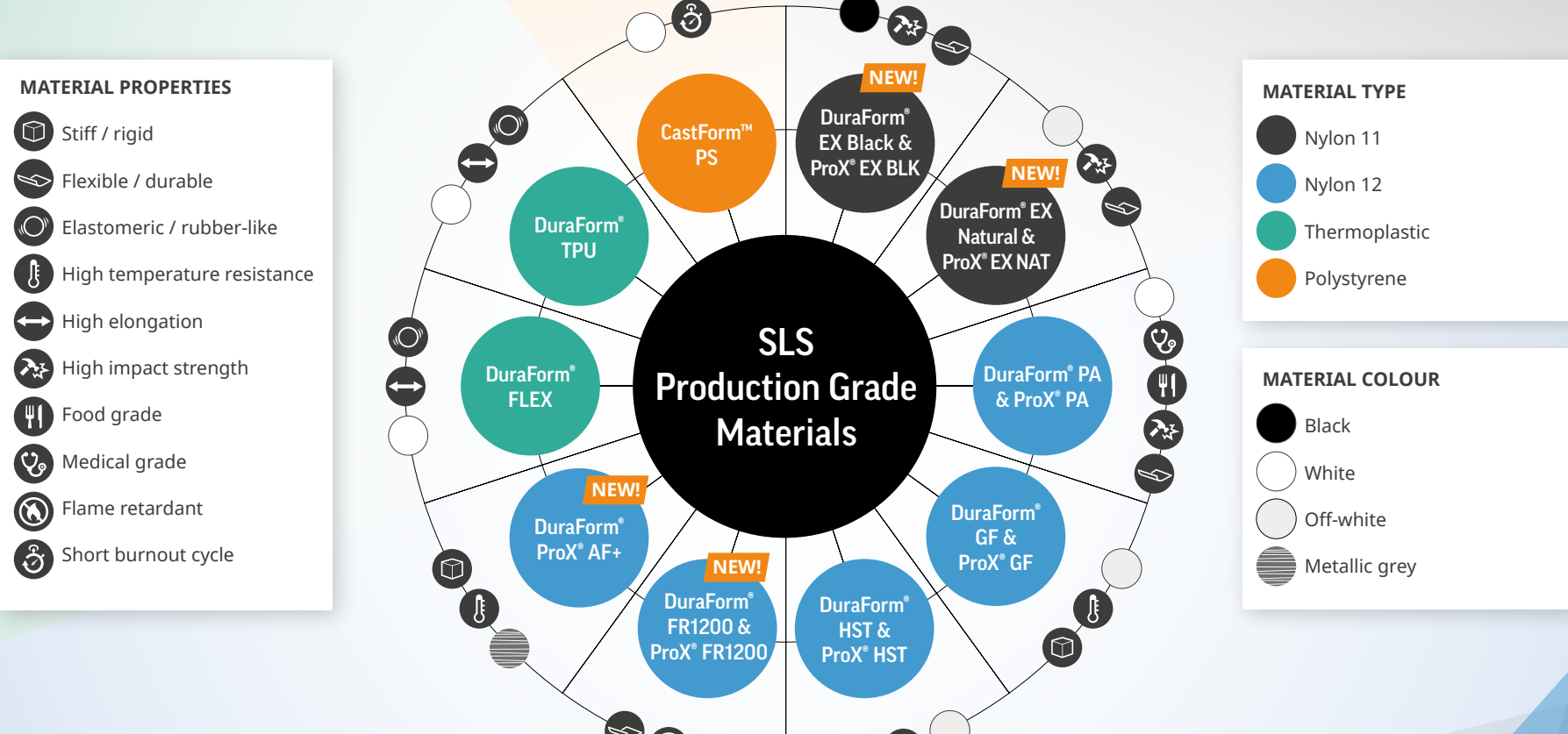


SLS Materials Guide



NYLON 11

DuraForm® EX Black & ProX® EX BLK **NEW!**

Impact and fatigue resistant plastic for harsh environments. Available in Natural and Black.

- Flexible / durable
- High elongation
- High impact strength



DuraForm® EX & ProX® EX Black Printer Compatibility	
ProX® 6100	✓
sPro™ 60	✓
sPro™ 140	✓
sPro™ 230	✓
ProX® 500	✓

NYLON 11

DuraForm® EX Natural & ProX® EX NAT **NEW!**

A strong, tough nylon 11 based plastic for production applications that handles the rigors of repeated cycling and use, even in harsh environments

- Flexible / durable
- High elongation
- High impact strength



DuraForm® EX Natural Printer Compatibility	
ProX® 6100	✓
sPro™ 60	✓
sPro™ 140	✓
sPro™ 230	✓
ProX® 500	✓

NYLON 12

DuraForm® PA & ProX® PA

Strong, tough Nylon 12 for production parts.

- Flexible / durable
- High elongation
- High-impact strength
- Food grade
- Medical grade



DuraForm® PA & ProX® PA Printer Compatibility	
ProX® 6100	✓
sPro™ 60	✓
sPro™ 140	✓
sPro™ 230	✓
ProX® 500	✓

NYLON 12

DuraForm® FR1200 & ProX® FR1200 **NEW!**

FAR 25.853 and UL 94-V2 compliant flame retardant Nylon 12 plastic with excellent surface finish.

- Flexible / durable
- Flame retardant



DuraForm® FR1200 Printer Compatibility	
ProX® 6100	✓
sPro™ 60	✓
sPro™ 140	✓
sPro™ 230	✓
ProX® 500	✓

NYLON 12

DuraForm® ProX® AF+ **NEW!**

High stiffness, aluminum-filled Nylon 12 with metallic appearance.

- Stiff / rigid
- High temperature resistance



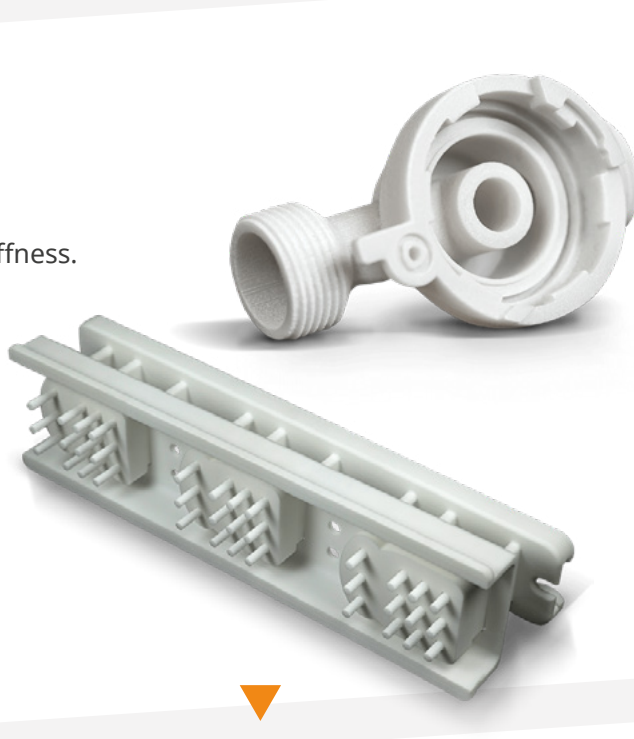
DuraForm® ProX® AF+ Printer Compatibility	
ProX® 6100	✓
sPro™ 60	x
sPro™ 140	x
sPro™ 230	x
ProX® 500	✓

NYLON 12

DuraForm® GF & ProX® GF

A glass-filled engineering plastic with excellent stiffness.

- Stiff / rigid
- High temperature resistance



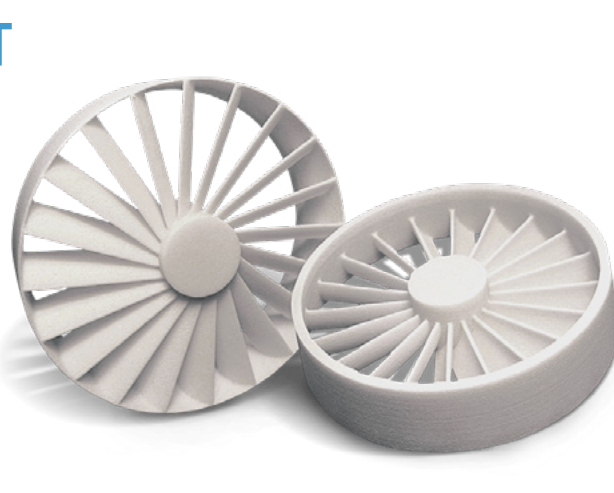
DuraForm® GF & ProX® GF Printer Compatibility	
ProX® 6100	✓
sPro™ 60	✓
sPro™ 140	✓
sPro™ 230	✓
ProX® 500	✓

NYLON 12

DuraForm® HST & ProX® HST

A fiber-reinforced engineering nylon with high temperature resistance.

- Stiff / rigid
- High temperature resistance



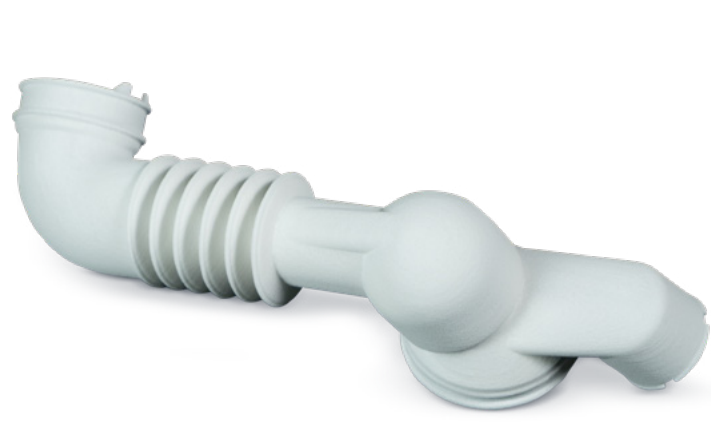
DuraForm® HST & ProX® HST Printer Compatibility	
ProX® 6100	✓
sPro™ 60	✓
sPro™ 140	✓
sPro™ 230	✓
ProX® 500	✓

THERMOPLASTIC

DuraForm® TPU

Thermoplastic elastomer material with rubber-like flexibility and functionality.

- Elastomeric / rubber-like
- High elongation



DuraForm® TPU Printer Compatibility	
ProX® 6100	x
sPro™ 60	✓
sPro™ 140	x
sPro™ 230	x
ProX® 500	x

THERMOPLASTIC

DuraForm® FLEX

Durable, rubber-like material.

- Elastomeric / rubber-like
- High elongation



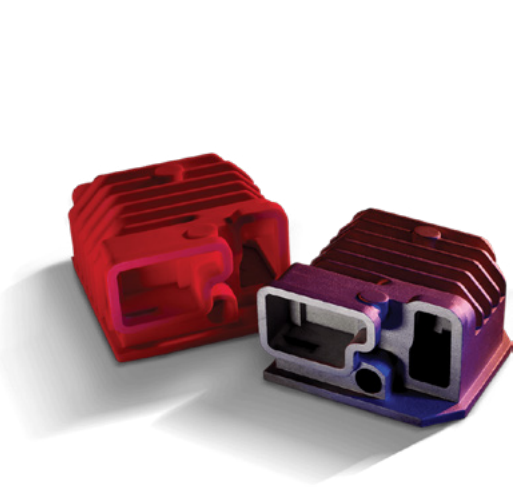
DuraForm® FLEX Printer Compatibility	
ProX® 6100	x
sPro™ 60	✓
sPro™ 140	x
sPro™ 230	x
ProX® 500	x

POLYSTYRENE

CastForm™ PS

Styrene-based, expendable pattern casting material, compatible with most standard foundry processes.

- Short burnout cycle



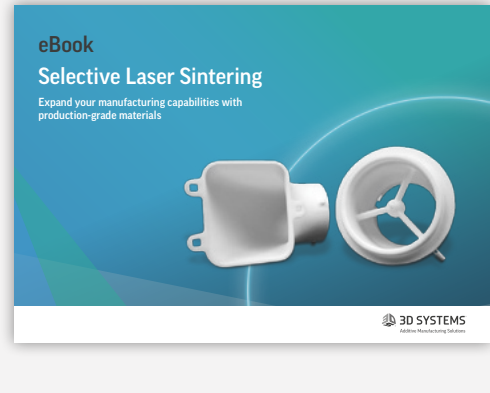
DuraForm® FLEX Printer Compatibility	
ProX® 6100	x
sPro™ 60	✓
sPro™ 140	x
sPro™ 230	x
ProX® 500	x

FREE EBOOK!

Selective Laser Sintering - Expand your manufacturing capabilities with production-grade materials

Download this free eBook to help you make the best decision for your SLS application. This guide will assist you in choosing exactly the right material combination for your production part.

- Choose from 10 production-grade materials for robust repeatable parts
- Discover the unique benefits of each material and learn about their applications
- Find out who else is using the materials and learn from their experience



[Download eBook](#)