



**3DXpert™ for SOLIDWORKS®**

# **TILTING OF SUPPORTS**




Automatic

Tutorial\_V2 - Updated: 14,0200,1599,1024(SP2)

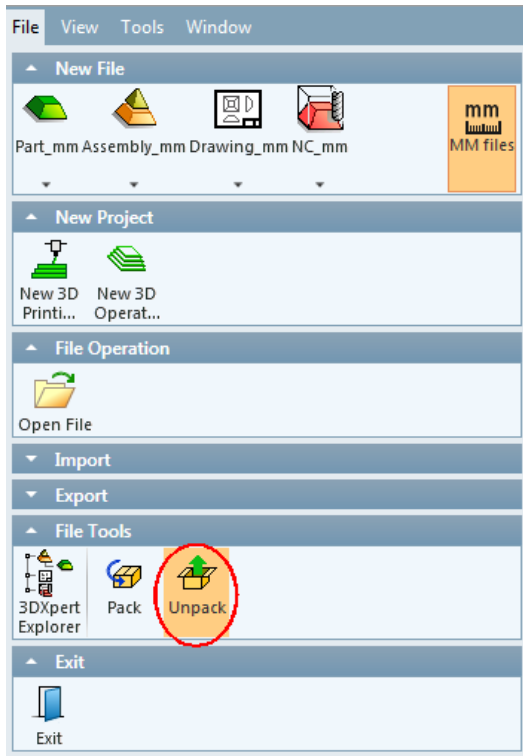


## Introduction

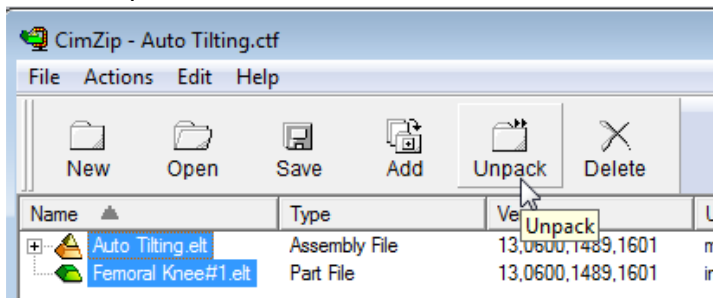
In this exercise, we will see that 3DXpert for SOLIDWORKS automatically tilts support structures.

<p>! Notice/ Remember</p>		Left mouse button name is <b>"pick"</b>
		Middle mouse button name is <b>"Exit"</b>
		Right mouse button name is <b>"Click"</b>

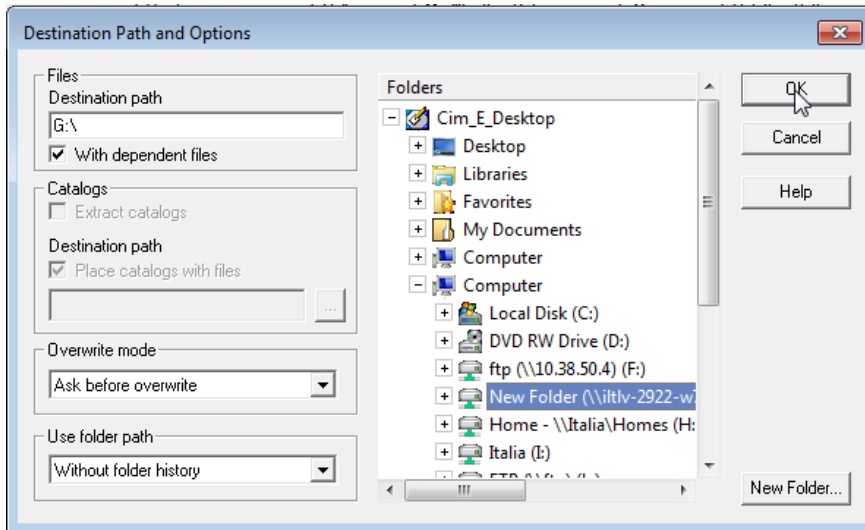
1. Unpack the file Auto Tilting.ctf
  - a. Select File>>Unpack and select the file Auto Tilting.ctf



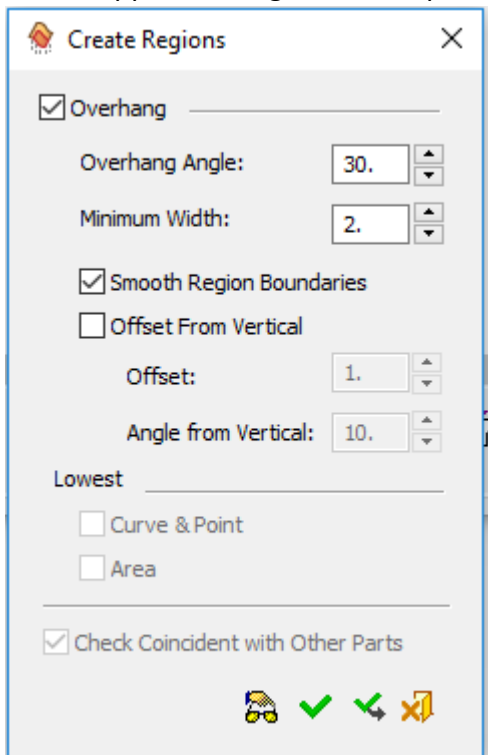
- b. Select Unpack



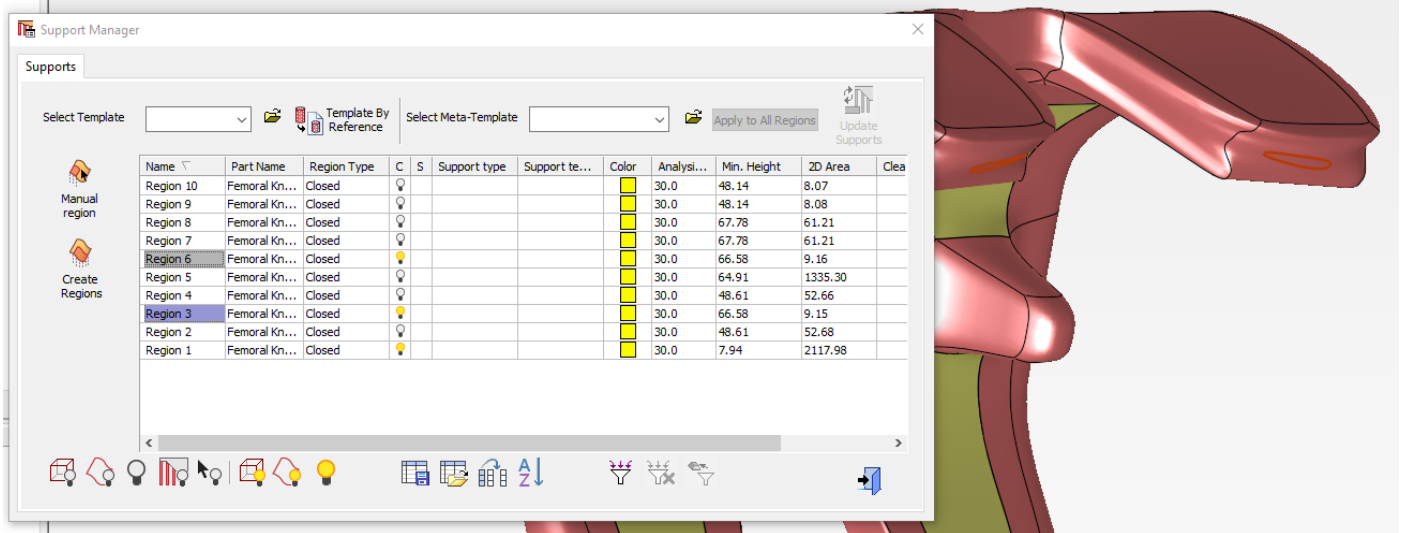
- c. Set the destination and select ok



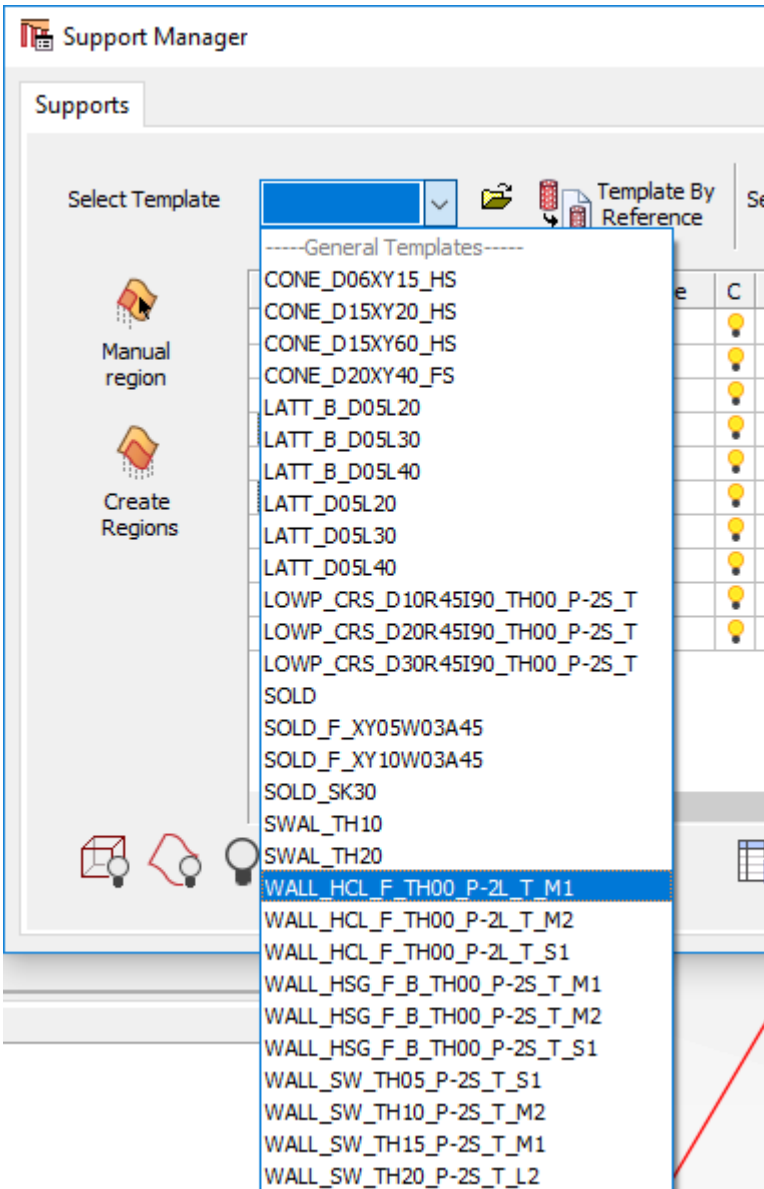
2. Load the assembly Auto Tilting.elt
3. Enter Support Manager>Set the parameters as below >Select OK



4. Select regions 3 and 6



5. Select the template marked in the image below ('WALL\_CROSS')

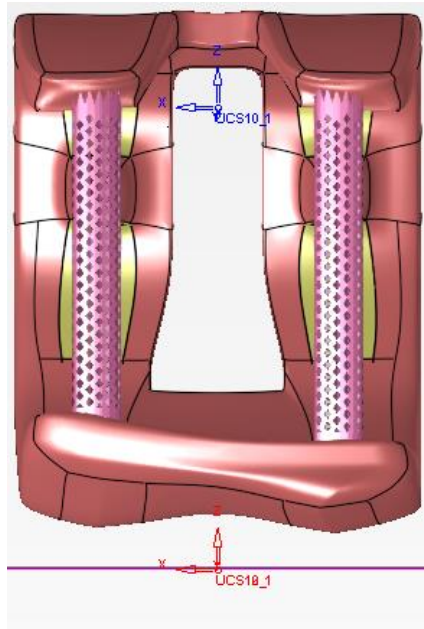
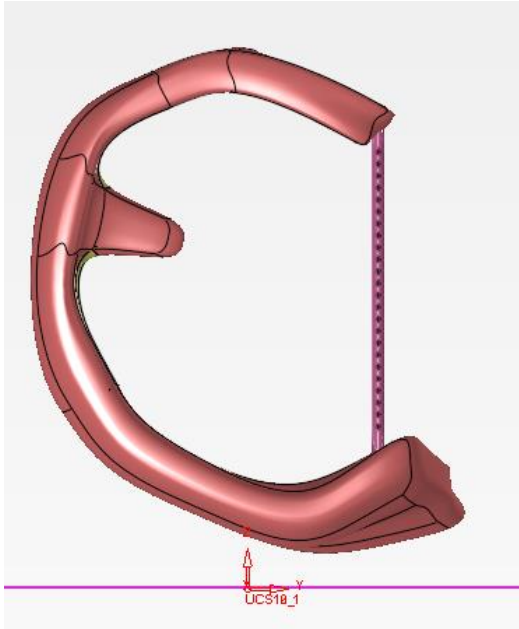




## Notice

The naming convention of the templates is explained in a separate document

6. See that the support touches the part

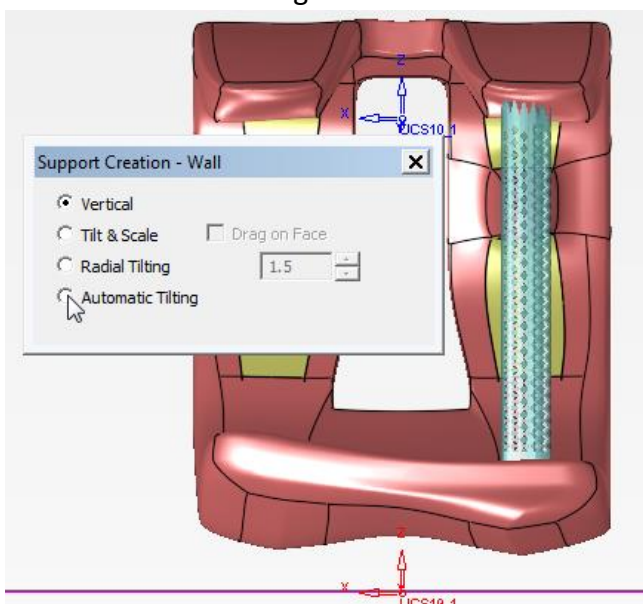


7. At this point we can add manual tilting or let the system perform the tilting automatically

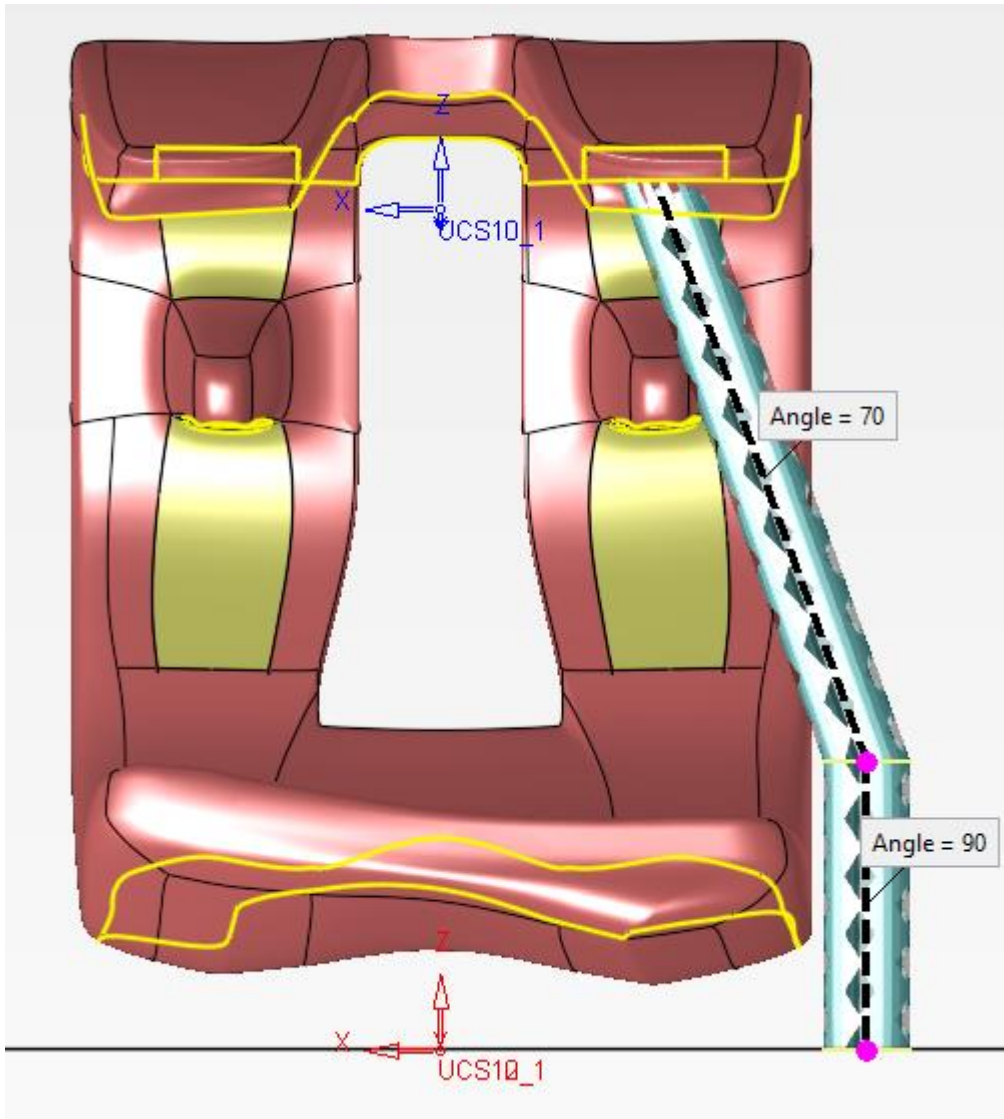
**Note:**

The automatic tilting makes such tilting that the created support (any type) does not intersect with the part (at least 1 mm)

8. RMB on region 3\_1 and select 'Edit Tilting'
9. Select Automatic tilting

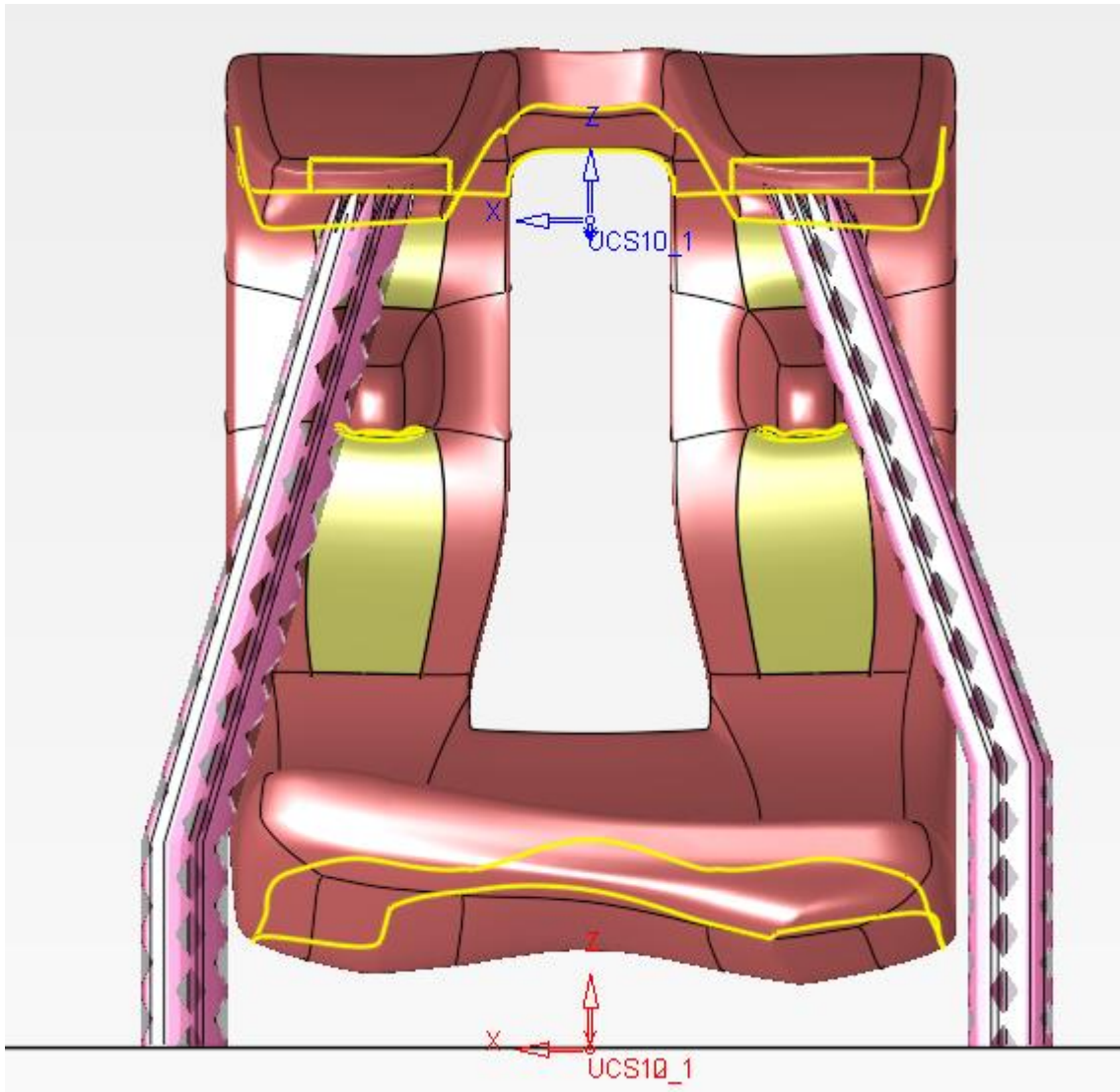


10. See that the support automatically moved away from the part



11. Select Ok and repeat the operation on region number 6\_1

The final result:



End of Exercise.